

# WAHL CLIPPER CORP.

STERLING, ILLINOIS

TITLE:

NO. 09484-300

NO.

REVISIONS

BY

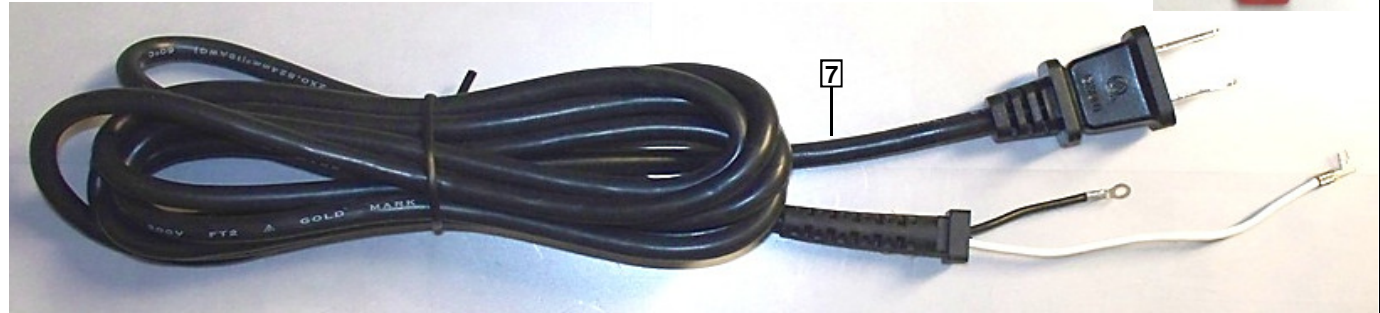
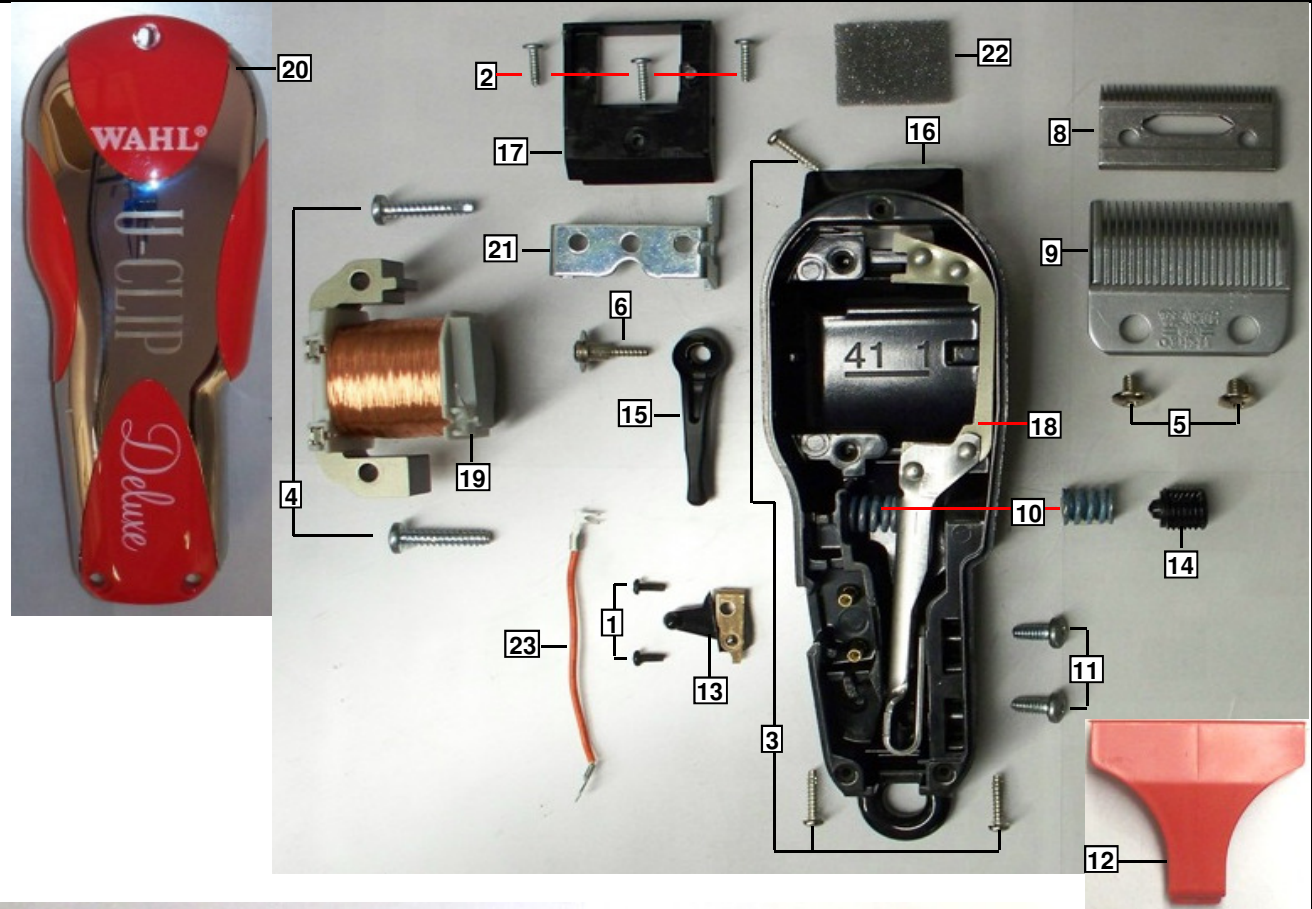
DATE

APPROVED

|                 |                 |                              |      |
|-----------------|-----------------|------------------------------|------|
| DRAWN<br>SB     | DATE<br>2.18.14 | WAHL ENGINEERING APPROVAL    | DATE |
| DRAFT<br>1      | DATE            | Wahl Quality Approval        | DATE |
| SHEET<br>1 of 4 |                 | Wahl Service Center Approval | DATE |

|  |  |  |  |
|--|--|--|--|
|  |  |  |  |
|  |  |  |  |
|  |  |  |  |

| ITEM NO. | Part #     | DESCRIPTION                           |
|----------|------------|---------------------------------------|
| 1        | 00491-001  | ECN #2177 Screw 2-56 x 1/4 Type F     |
| 2        | 00492-300  | Screw - #3 x 3/8 BF                   |
| 3        | 00495-200  | Screw - #4 x 1/2 BF (Lid)             |
| 4        | 00503      | Screw 8-32 x 3/4 Type 25              |
| 5        | 00508-400  | Phillips Blade Screw 10-32UNF-2A      |
| 6        | 00512-100  | E2308 Screw with Washer - Blade Lever |
| 7        | 00648-700  | Cord US Plug 96" SVT BK               |
| 8        | 01052-250  | Wide Hole Top Blade (Grind)           |
| 9        | 01076-401  | Wahl 30-15-10 Bottom Plated New       |
| 10       | 01177      | Tuning Spring 60Hz - Smal Blue        |
| 11       | 01567-201  | Screw LT Hand Torx Arm                |
| 12       | 08019-100  | Blade Guard - Clipper - Red           |
| 13       | 08108-001  | Switch Trigger Assembly - Black       |
| 14       | 08117-100  | 1 Pc Power Screw - Black              |
| 15       | 08227-1001 | Blade Lever - New - Clipper           |
| 16       | 08409-2701 | Nosepiece Reg Cord Blank              |
| 17       | 08442-3333 | Interlock Case 2 Pins                 |
| 18       | 08857      | Arm Super Shunt                       |
| 19       | 08859-2910 | Super Shunt Coil                      |
| 20       | 09122-4101 | 2 Pc 89 Lid U Clip Assembly           |
| 21       | 09214      | Blade Slide .060                      |
| 22       | 94104-400  | Foam - 1 x 3/4 x 1/8 Super Shunt      |
| 23       | 97699-050  | Jumper Wire 2 5/8 Poke In Terminal    |



**Specifications**

- 1. Tune Voltage..... 126 Volts 60 Hz
- 2. Wattage..... 11.0 - 13.0
- 3. Blade Speed..... 7,200 Cutting Strokes Per Minute
- 4. Blade Travel / Stroke..... 0.280/0.291" or 7.1/7.4mm
- 5. Blade Tension..... 18-24 in/oz
- 6. Blade Offset..... .025"- .050"
- 7. Cutting..... Must cut Wahl certified media
- 8. Cutting System..... Comb: High grade steel Per Wahl Bill Of Material  
Cutter: High grade steel Per Wahl Bill Of Material
- 9. Cord..... Polarized Round Professional
- 10. Drive..... Vibrator Motor
- 11. Switch Function..... Toggle ON/OFF
- 12. Noise Level..... Less than 70 db
- 13. Housing material..... Base: Per Wahl Bill of Material  
Lid: Per Wahl Bill Of Material
- 14. Clipper Approvals..... UL - Canada and US

**Appearance 9.6.11**

1. No rust on any exposed metal surfaces like: blades or screws.
2. All visible surfaces, logo must be free of pits, chips, cracks, scratches, sink marks, flash, color deviations, and imperfections.
3. Must be free of dirt, debris, and offensive odor: Clipper, packaging and all accessories.
4. Excess oil should be wiped off of the clipper.
5. Logo and artwork to be legible.
6. Cord wire tie should be secured around cord and not fall off or allow cord hank to fall apart.

**Construction**

1. All screws must be tight and not stripped.
2. Clipper to have the following approvals:  
UL - Canada and US
3. Drop test: Drop unit from 3 feet onto hardwood surface in 3 different orientations. There must be no exposed live parts.

**Performance (At Proper Voltage and Frequency)**

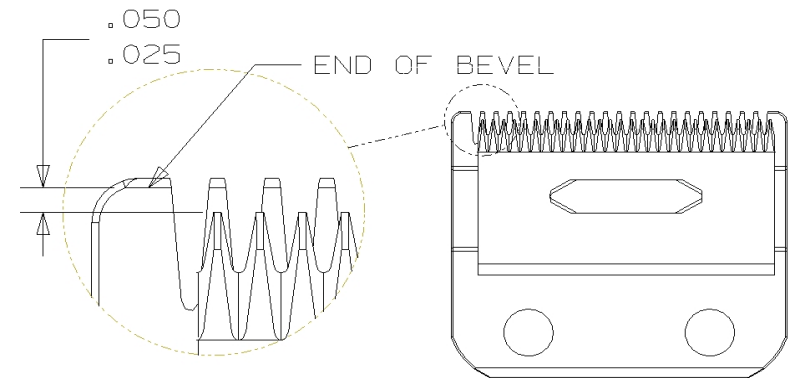
1. Clipper must be in tune in accordance with procedure on sheet #4.
2. Wattage must be 11.0 - 13.0
3. Blades must have a offset of .025"- .050" (see sheet 4)
4. Blade Tension must be 18-24 in/oz
5. Noise level must be Less than 70 db
6. Clipper must be able to cut Wahl certified media.

**Quality Assurance**

1. After being approved, no further changes in material, packaging, design or performance may be made without written permission from WAHL CLIPPER CORPORATION.

### Blade Li 9.6.11

1. Tips of top blade should be  $.025"$  to  $.050"$  ( $.635\text{mm}$  to  $1.270\text{mm}$ ) back from the tips of the bottom blade or end of bevel if bevel is present. ( See Diagram)
2. Extreme left hand tooth of top blade must be covering or to the left of the first small tooth of the bottom blade.



### Checking Tension

1. Make certain there is a thin flat tip on the end of the force gage.
2. Put the gage tip between the teeth in the center of the bottom blade and push on the teeth of the top blade.
3. Continue applying pressure to the top blade until it separates from the bottom blade.
4. Ease off on the pressure until the top blade just comes into contact with the bottom blade again. This is the point where the tension reading is to be recorded from the gage.
5. Repeat steps 1- 4 to insure that a good reading was obtained.

### Clipper Tune Procedure

1. Run the clipper at the proper tune voltage.
2. Turn the power screw in (clockwise) until the clipper begins to clatter.
3. Turn the power screw out (counter clockwise) until the clipper just stops clattering.
4. Turn the power screw out an additional  $1/8$  turn.
5. Place in the power screw cap (if unit has a two piece power screw).

